



Innovative Hydronic Solutions

"Rethink the way you plumb."



Innovative Hydronic Solutions

2022 Product Catalog

Feb. 1st 2022



Table of Contents

About Us

Page_____	3
-----------	---

Hydro-Grid Panels

HGP-38.5x45A_____	4-5
HGP-EXP-38x35.25A_____	6

Hydro-Pump Brackets

Summary_____	7
HPB-1526A_____	8
HPB-1526-2B_____	9
HPB-1526-45A_____	10
HPB-EXT-1526-2B_____	11
HPB-EXT-1526-45A_____	12
HPB-43100A_____	13
HPB-43100-45A_____	14
HPB-EXT-43100-45A_____	15

Hydra-Sep Brackets

Summary_____	16
HSB1_____	17
HSB1.25A_____	18
HSB1.5A_____	19
HSB2A_____	20
HSB2.5-AFA_____	21

Expansion Tank Bracket

ETB-4.75x10A_____	22
-------------------	----

Bump Out Bracket

BOB-7.40x7.25A_____	23
---------------------	----

Terms & Conditions

_____	24
-------	----

All Products Are:



OUR PRODUCTS ARE PROUDLY MADE IN THE USA!

Innovative Hydronic Solutions: Our Company -



Innovative Hydronic Solutions was formed with one real purpose, and that is to make the tedious task of plumbing a hydronic system faster, easier, more efficient, and more enjoyable for plumbers and pipe fitters.

We continue to innovate and search for hydronic solutions that can take an inexperienced tradesmen and make them faster, more efficient, and create a system that looks good, but more importantly, a system that works properly.

Our end goal for us is to save your company time and to put hard earned cash back into your pocket. You will be able to do this if you use our products and "Rethink the way you plumb".

Phone # (605) 772-4632

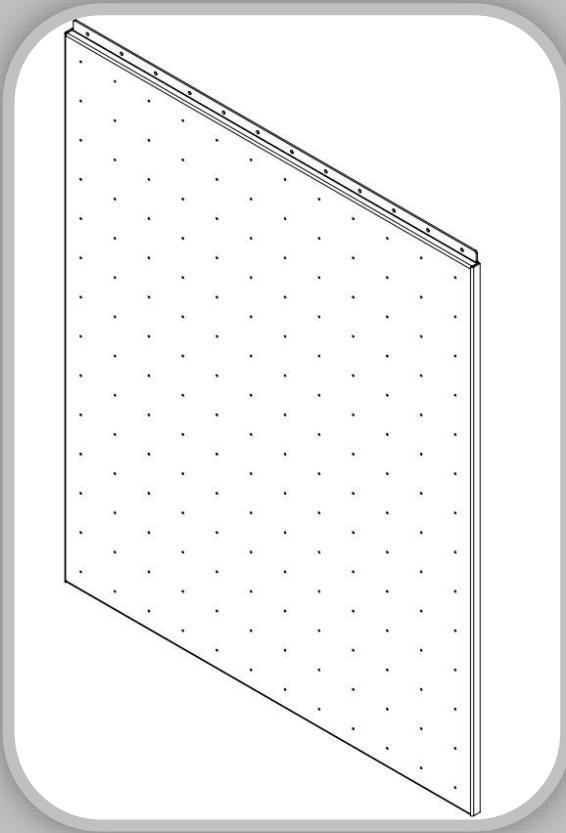
Email: info@innovativehydronicsolutions.com

Email: sales@innovativehydronicsolutions.com

Website: www.innovativehydronicsolutions.com

Hydro-Grid Panel

P# HGP-38.5x45A



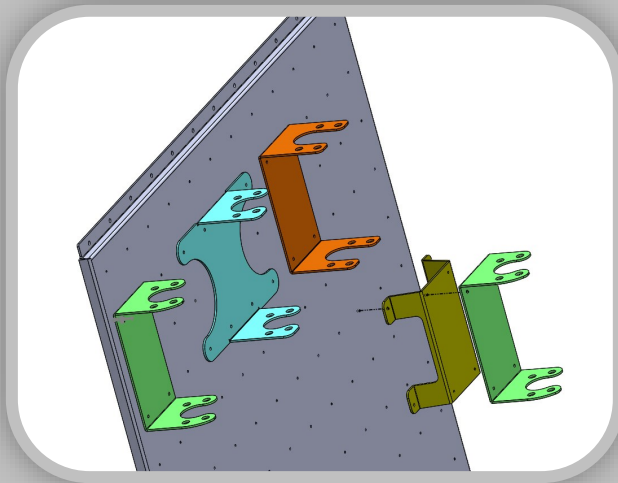
The Hydro-Grid Panel is designed with 308 holes every 3.2 sq inches, which match up with all of our brackets that we have designed.

This allows for a quick and easy installation of Boilers and Hydronic Accessories.

Once you have leveled up the Hydro-Grid Panel and attached to a wall, there is no reason to have a level from there on out, because the Hydro-Grid ensures that every component that is installed on the Grid will be straight and level

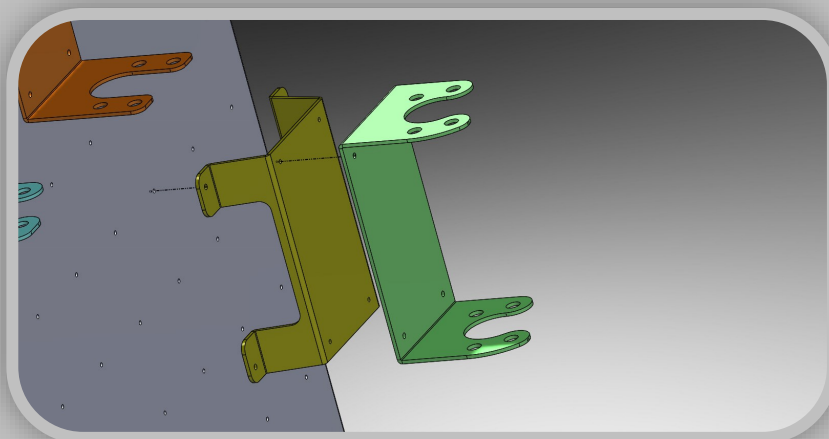
Part # - HGP-38.5x45A

Dimensions: 38.5" wide x 45" tall x .75" deep



Benefits:

Saves Time - Saves Money - Correct Installations - Prefab Boiler Rooms



Hydro-Grid Panel *continued*

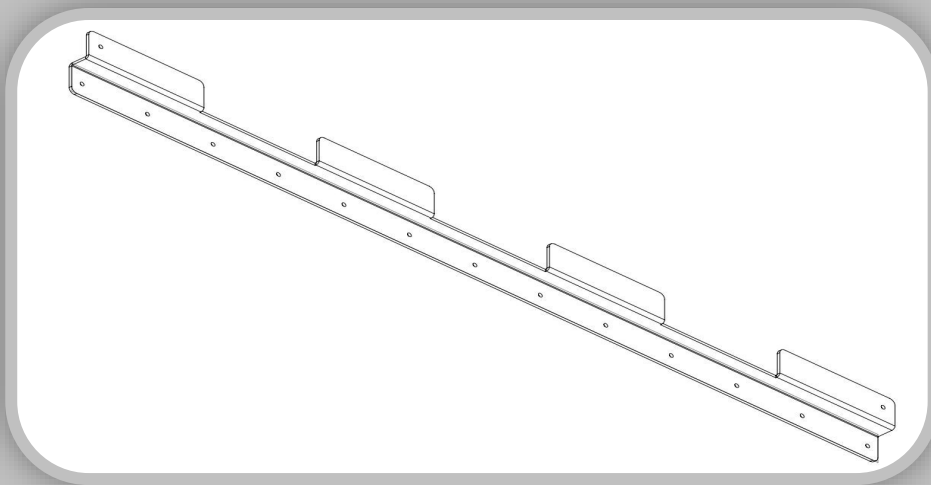
The Hydro-Grid Panel is designed from aluminum and is corrosion resistant which holds up well in boiler room applications.

Included in each Hydro-Grid order, you receive the bottom "Z" bracket which holds the bottom portion of the Grid in place along with 2 1/2" screws to attach the grid securely to a wall.

If you are installing the Hydro-Grid to a concrete wall, you are responsible for providing screws.



Bottom "Z" Bracket



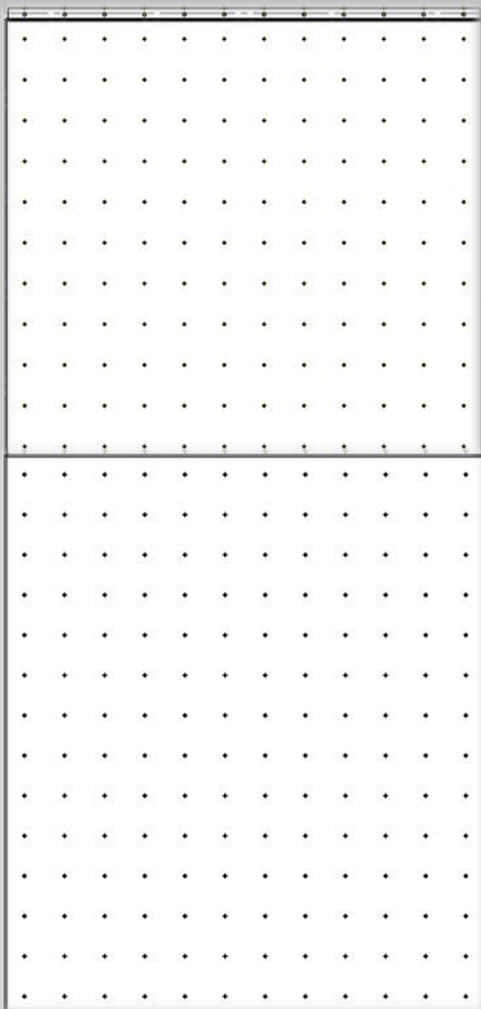
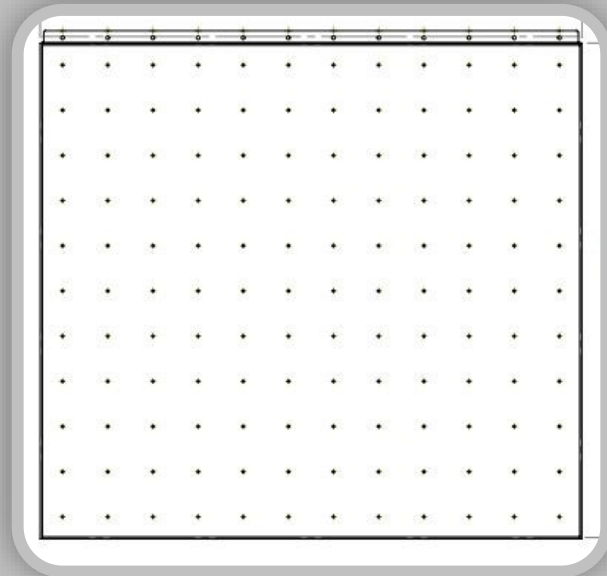
Hydro-Grid Expansion Panel

The Hydro-Grid Expansion Panel is designed with 132 holes every 3.2 sq inches, which matches up with all the brackets that we design.

The Hydro Grid Expansion Panel is also designed to go on top of the HGP-38.5x45A to allow for more height in a mechanical room. Place this Grid Panel on top to gain an additional 36" in height from where you mounted the first Hydro-Grid Panel.

You can also use this panel instead of the HGP-38.5x45A for smaller boiler jobs that do not require a lot of space.

P# HGP-EXP-38x35.25A



Part # - HGP-EXP-38.5x35.25A

Dimensions: 38.5" wide x 35.25" tall x .75" deep

Stacked Grids:

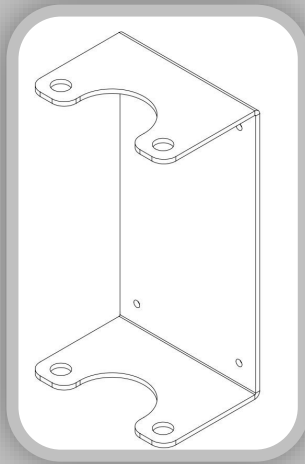
With both Hydro Grid Panels stacked you have a total of 3,080 sq. inches of space to mount boilers and various hydronic accessories.

If you have the room side to side and vertical, you can use however many Hydro-Grid Panels it takes to get the job done.

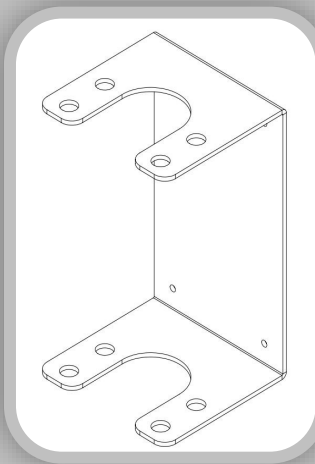
If you have a multiple boiler system you can also mount boilers off of the Hydro-Grid and utilize the Hydro-Grid to mount all the pumps and separator brackets if needed.

Hydro-Pump Brackets Summary

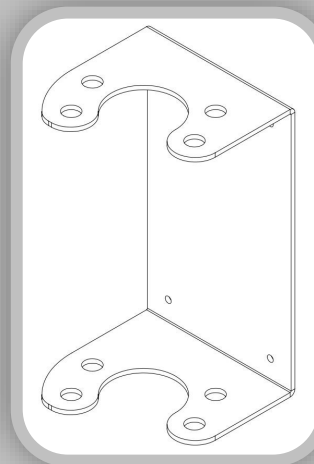
Figure 1.



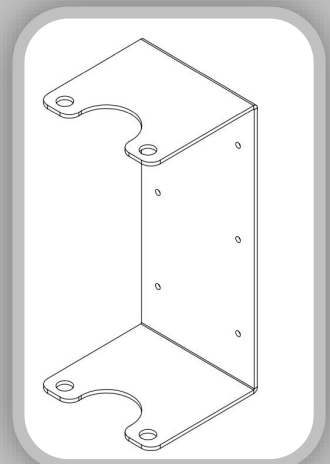
P# HPB-1526A



P# HPB-1526-2B



P# HPB-1526-45A



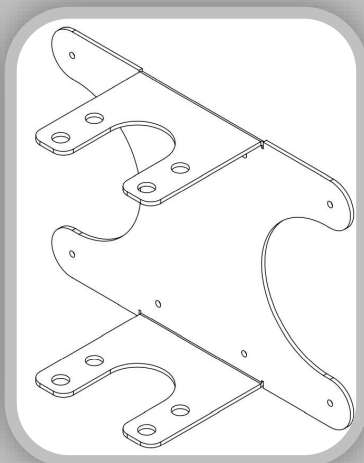
P# HPB-43100A

Our Hydro-Pump Brackets are designed to fit Grundfos 15-58, 26-99/3, 26-150 & 43-100 pumps. Our brackets are also designed to mount Taco pumps 005 thru 0010 and Taco 007 & 0013 as well. There are two categories of pumps that we designed. The first category is Figure 1, where you would screw the pump bracket to the Hydro-Grid panel and then mount the pumps to each individual bracket with the correct isolation flange kit that you purchased.

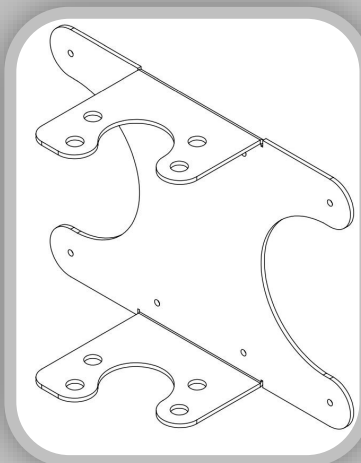
The other category of pump brackets are Figure 2. These pump brackets allow you to bolt the pump to the bracket and assemble everything first, and then mount the pump to the Hydro-Grid with the extended arms as show in Figure 2. Figure 2 pump brackets are also great for prefab boiler jobs. You can mount all the pumps on a bench and then either install them at the job site or right onto the Hydro-Grid at the shop, and mount the Hydro-Grid to the basement wall at the jobsite.

Included in each Hydro-Pump Bracket is the correct screws to attach to the Hydro-Grid Panels along with spacer kits to adapt to different isolation flanges. Our brackets were designed for Webstone Flanges, however, with spacer kits included in each pump bracket box you can use all types of isolation flanges including Taco & Grundfos isolation flanges. There are also 1.5" screws in the pump bracket box if you choose to not use the Hydro-Grid system and are installing on a regular plywood wall.

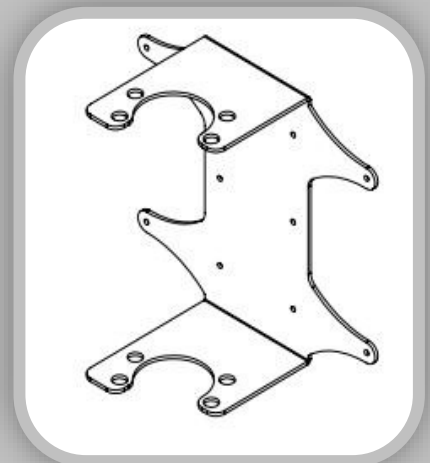
Figure 2.



P# HPB-EXT-1526-2B



P# HPB-EXT-1526-45A



P# HPB-EXT-43100-45A

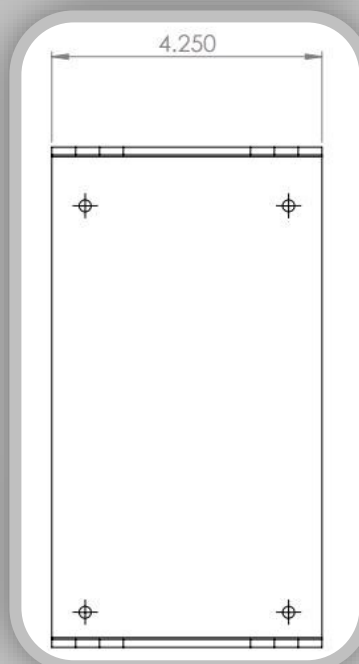
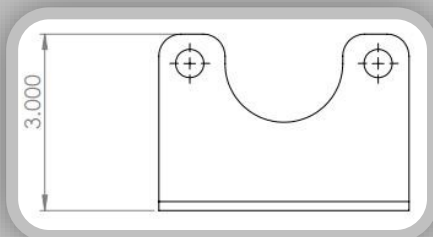
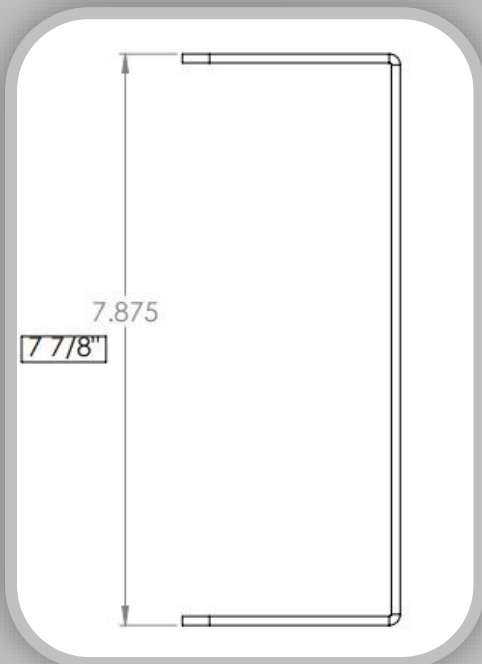
Hydro-Pump Brackets *continued...*

HPB-1526A



HPB-1526A

The HPB-1526A pump bracket will mount Grundfos 15-58, 26-99, 26-150 pumps. This bracket will also mount Taco 005 thru 0010 and also Taco 0011 thru 0014 pumps as well. This pump bracket is designed for 6 1/2" flange to flange pumps, however, with the spacer kits included with each pump bracket, you can also mount a 6 3/8" flange to flange pump. Included in each bracket is spacers kits, screws and instructions. Each bracket has 3.2 sq inch holes to mount to the Hydro-Grid Panel.



Hydro-Pump Brackets *continued...*

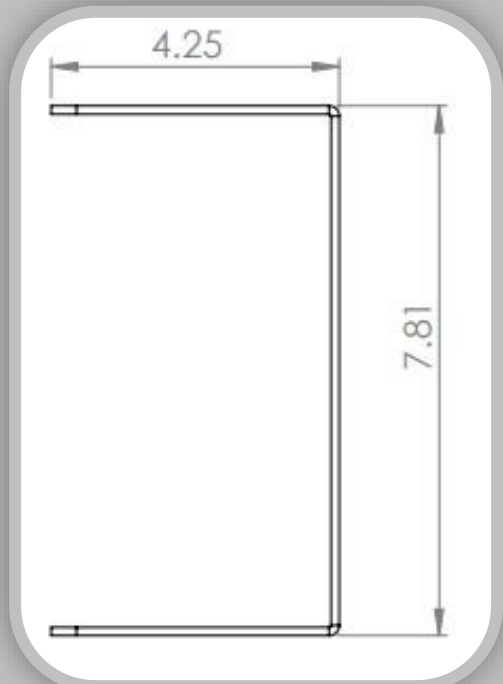
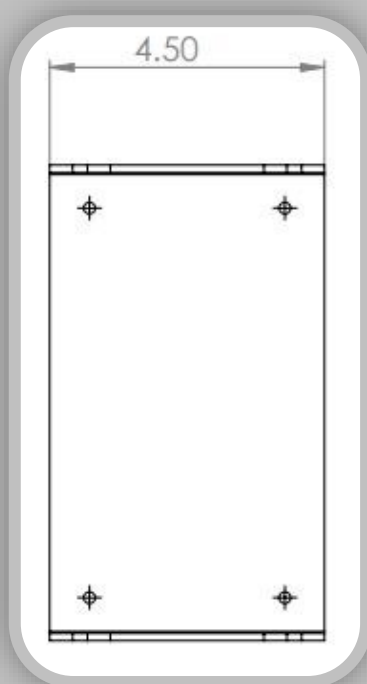
HPB-1526-2B



HPB-1526-2B

The HPB-1526-2B was designed with 2 sets of mounting holes. If you mount the pump to the bottom set of holes, the centerline of the pipe will be 1" & 1.25" which matches the Caleffi 548 series Hydraulic Separators. The top set of holes will change the centerline of the pipe to 1.5" & 2" which matches the Caleffi 1.5" & 2" 548 series Hydraulic Separators. If you are piping to a larger 1.5" or 2" separator, you would mount the pump on the top set of holes to match the pipe centerline to avoid any rolling offsets.

The HPB-1526-2B will mount Grundfos 15-58, 26-99, 26-150 and Taco 005 thru 0014 pumps.



Hydro-Pump Brackets *continued...*

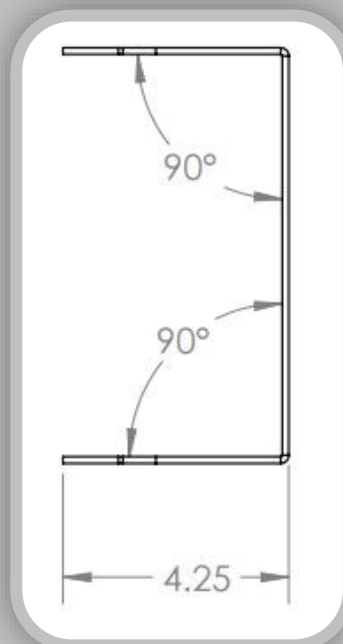
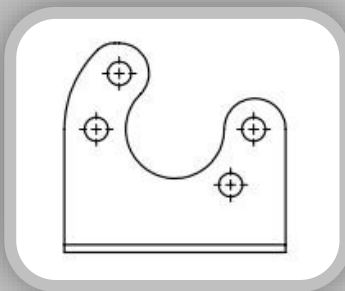
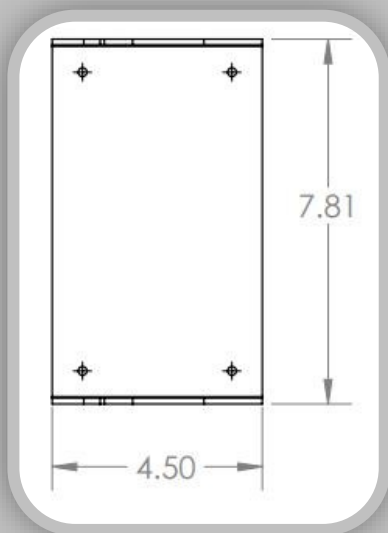
HPB-1526-45A



HPB-1526-45A

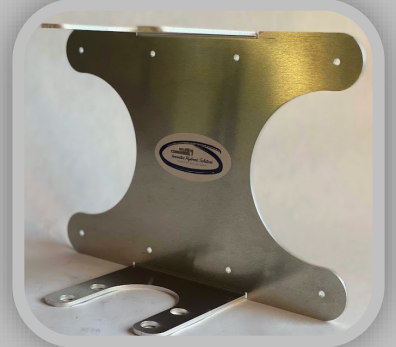
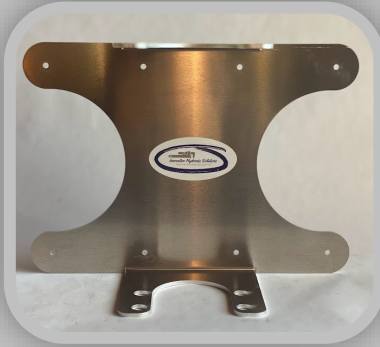
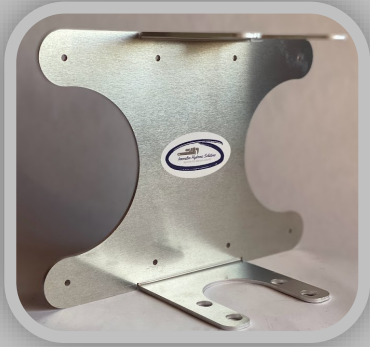
The HPB-1526-45A was designed with 2 sets of holes. The first set of holes is so the pump can be mounted straight like our other pump brackets. The second set of holes is an optional 45 degree mounting holes to kick out the pump at a 45 degree angle for easier wiring. This is handy when you have multiple pumps aligned in really close quarters. When the pumps are installed in the 45 degree angled position, it allows for easier wiring for some pumps.

The HPB-1526-45A will mount Grundfos 15-58, 26-99, 26-150 & Taco 005 thru 0014 pumps. Included in each pump bracket are screws and spacer kits for the isolation flanges.



Hydro-Pump Brackets *continued...*

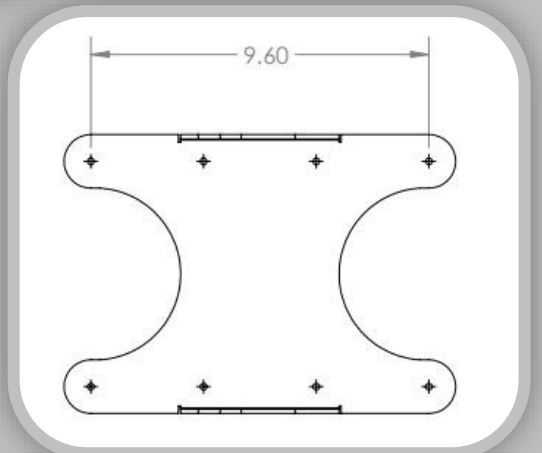
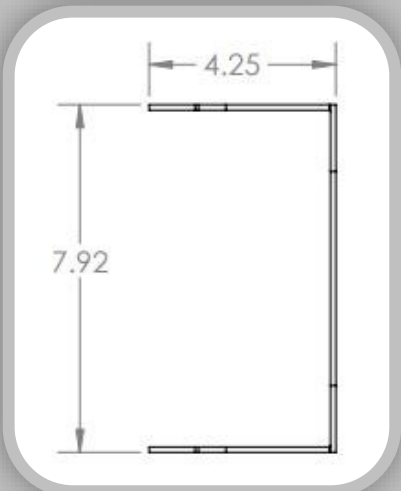
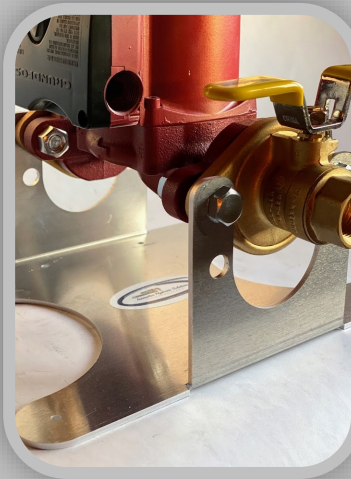
HPB-EXT-1526-2B



HPB-EXT-1526-2B

The HPB-EXT-1526-2B was designed with two sets of holes and also with extended arms. If you mount the pump to the bottom set of holes, the centerline of the pipe will be 1" & 1.25" which matches the Caleffi 548 Series Hydraulic Separators. The top set of holes will change the centerline of the pipe to 1.5" & 2" which matches the Caleffi 1.5" & 2" 548 Series Hydraulic Separators. If you are piping to a larger 1.5" or 2" separator, you would mount the pump on the top set of holes to match the centerline of the pipe to avoid any rolling offsets.

The HPB-EXT-1526-2B will mount Grundfos Pumps 15-58, 26-99, 26-150 and Taco Pumps 005 thru 0014.



Hydro-Pump Brackets *continued...*

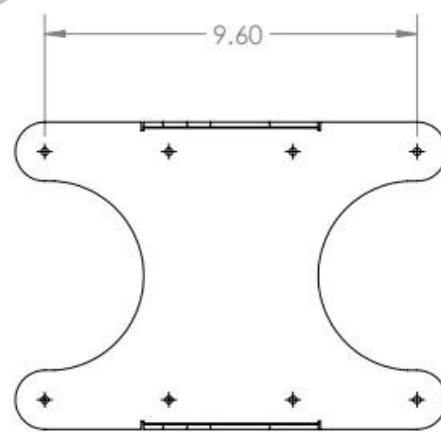
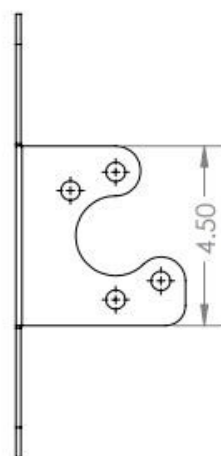
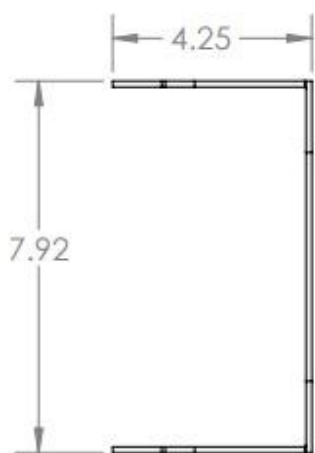
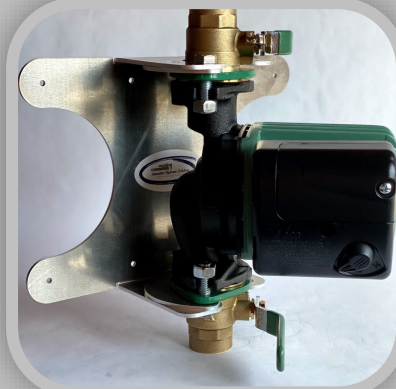
HPB-EXT-1526-45A



HPB-EXT-1526-45A

The HPB-EXT-1526-45A was designed with two sets of holes and also with extended arms. The first set of holes is to mount the pump in a straight position like our other brackets. The second set of holes is to mount a pump at a 45 degree angle. The 45 degree angle mount makes it easier for wiring some pumps. The extended arms allow you to mount the pump on a bench and assemble everything first, and then mount your pump to the Hydro-Grid. The extended arms are a great product for prefab boiler jobs with several pumps.

These brackets will mount a Grundfos 15-58, 26-99, 26-150 and also Taco pumps 005 thru 0014.



Hydro-Pump Brackets *continued...*

HPB-43100A



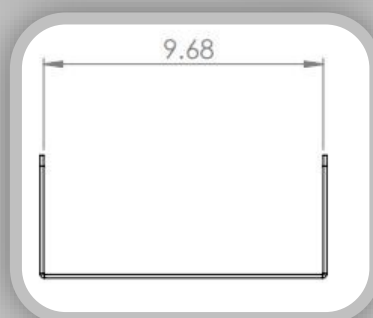
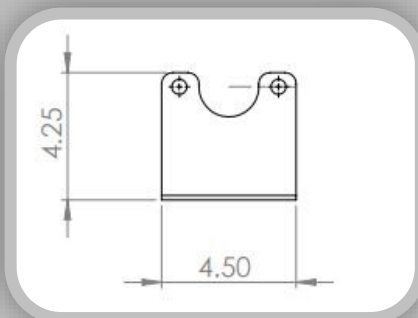
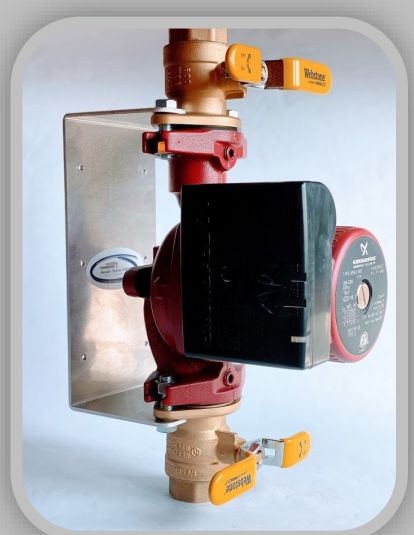
HPB-43100A

The HPB-43100A pump bracket was designed for a Grundfos 43-100 and Taco 0012 pump.

This bracket is designed for 8 1/2" flange to flange pumps.

The centerline of this pump bracket matches the 1.5" and 2" Caleffi 548 Series Hydraulic Separators.

Included in each pump bracket box is screw kits and spacers kits. There are x6 holes on the back of the bracket at 3.2 sq inches to fit the Hydro-Grid Panel.



Hydro-Pump Brackets *continued...*

HPB-43100-45A

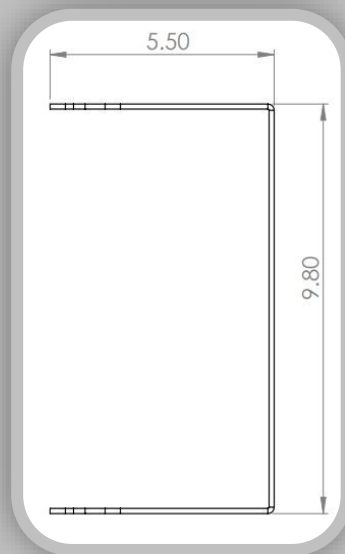
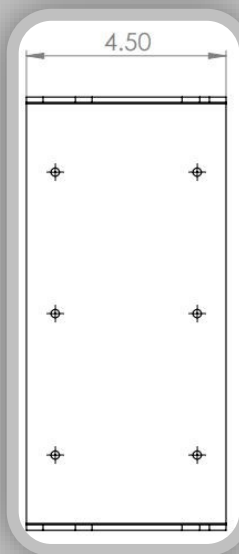
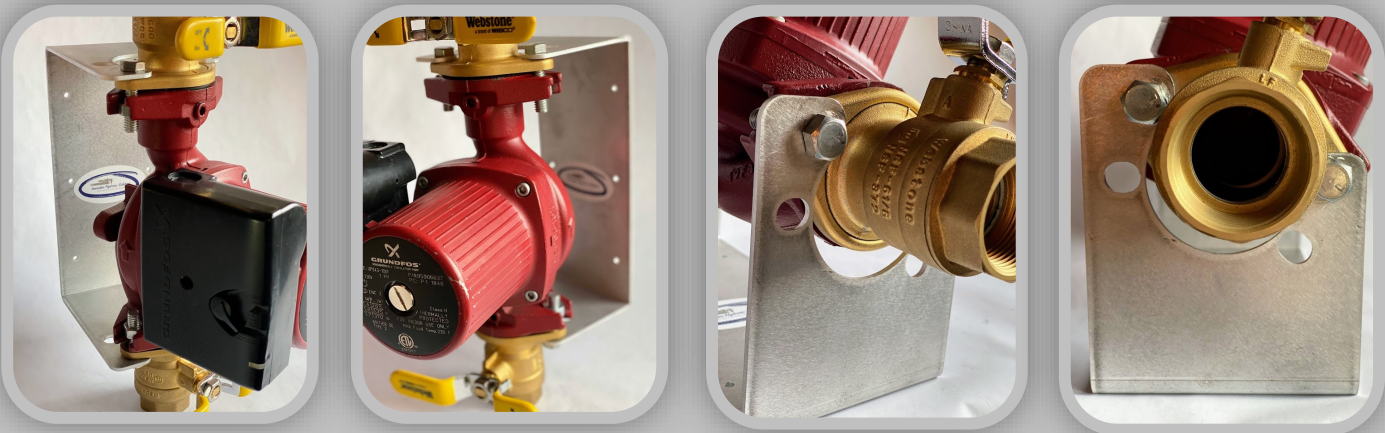


HPB-43100-45A

The HPB-43100A pump bracket was designed for a Grundfos 43-100 and Taco 0012 pump. Its designed to house a 8 1/2" flange to flange pump. This bracket has 2 different mounting options. The first set of holes is so the pump can be mounted straight like our other pump brackets. The second set of holes is an optional 45 degree mounting holes to kick out the pump at a 45 degree angle for easier wiring. This is handy when you have multiple pumps aligned at really close quarters. When the pumps are installed in the 45 degree angled position, it is sometimes easier to wire the pump.

The centerline of this pump bracket matches the 1.5" and 2" Caleffi 548 Series Hydraulic Separators.

Included in each pump bracket box is screw kits and spacers kits . There are x6 holes on the back every 3.2 sq inches to match the Hydro-Grid Panel.



Hydro-Pump Brackets *continued...*

HPB-EXT-43100-45A

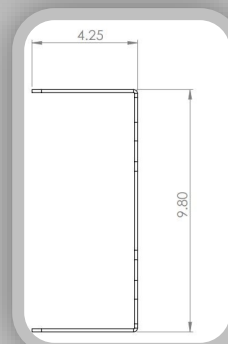
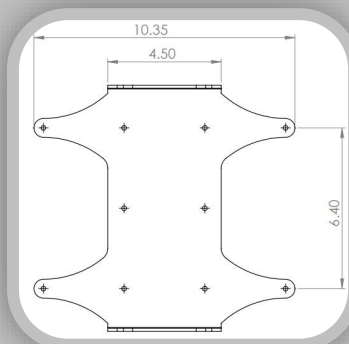


HPB-EXT-43100-45A

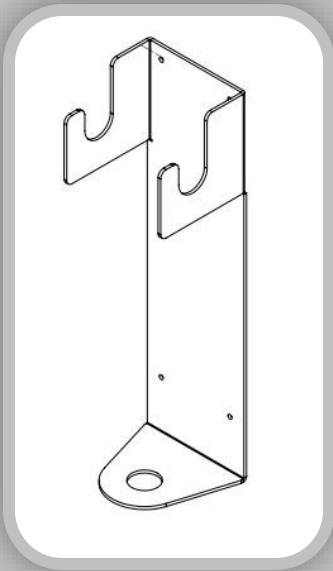
The HPB-EXT-43100-45A was designed with two sets of mounting holes and also extended arms. The first set of holes is to mount the pump in a straight position like our other brackets. The second set of holes is to mount a pump at a 45 degree angle. The 45 degree angle mount makes it easier for wiring for different pumps. The extended arms allow you to mount the pump on a bench and assemble everything first, and then mount your pump to the Hydro-Grid. The extended arm pump brackets are a great product for prefab boiler jobs.

These brackets will mount a Grundfos 43-100 and a Taco 0012.

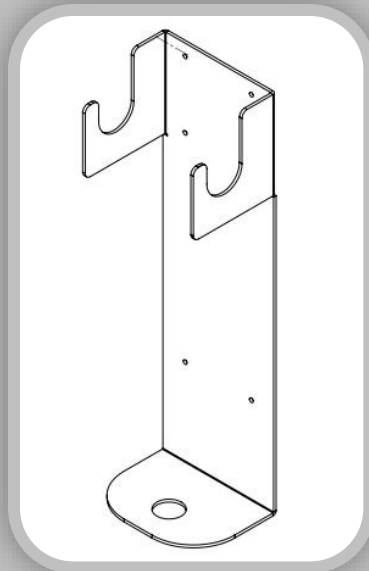
The HBT-EXT-43100-45A bracket is designed for a 8 1/2" flange to flange pump. Included with each pump are screws and spacers.



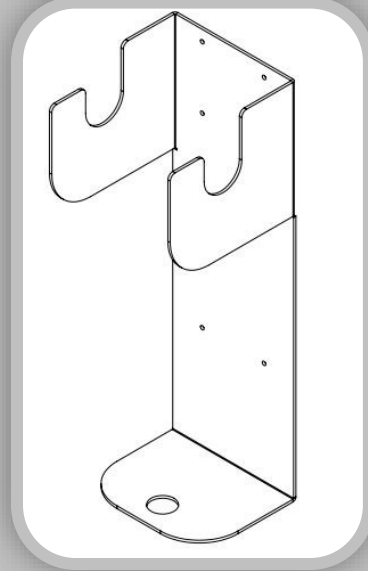
Hydra-Sep Brackets Summary



P# HSB1A

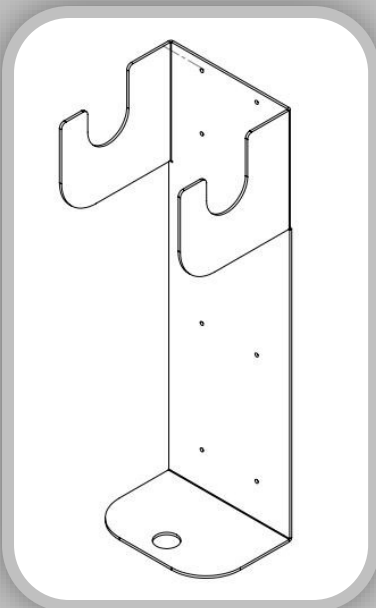


P# HSB1.25A

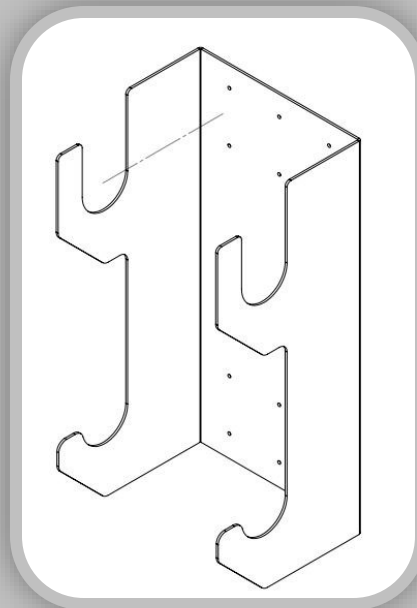


P# HSB1.5A

Our Hydra-Sep Brackets are designed to fit Caleffi 548 Hydraulic Separators. We currently have sizes 1" thru 2" NPT and also a bracket for the 2.5" ANSI Flange Separator NA548 series. 3" ANSI thru 6" ANSI are future models that we are working on as well. The Caleffi Hydraulic Separators simply cradle into the arms of the separator brackets and the bottom drain port fits thru the bottom hole. These brackets are very rigid and strong. The separator brackets are made of aluminum which is corrosion resistant and hold up very well in mechanical rooms.



P# HSB2A



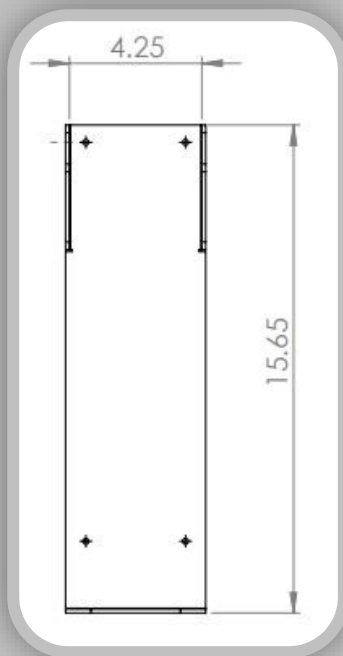
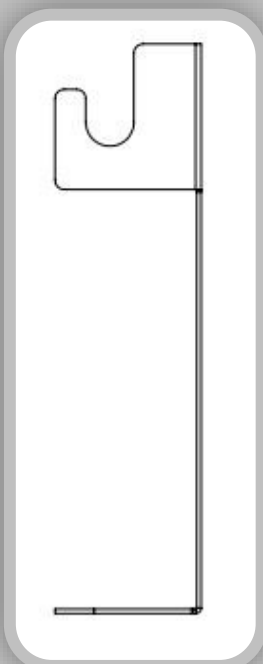
P# HSB2.5-AFA

Hydra-Sep Brackets *continued...*

HSB1A



The HSB1A hydraulic separator bracket holds a 1" Caleffi 548 Series Hydraulic Separator. This bracket is specifically designed for this hydraulic separator. It has (x4) 3.2 sq inch holes on the back of the bracket which match up with the Hydro-Grid Panel.

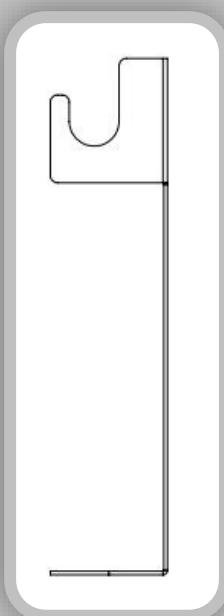
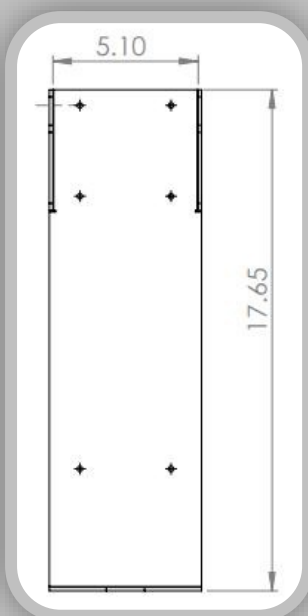


Hydra-Sep Brackets *continued...*

HSB1.25A



The HSB1.25A hydraulic separator bracket holds a 1.25" Caleffi 548 Series Hydraulic Separator. This bracket is specifically designed for this hydraulic separator. It has (x6) 3.2 sq inch holes on the back of the bracket which match up with the Hydro-Grid Panel.

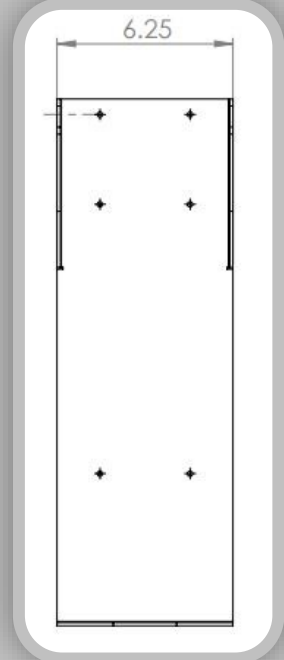
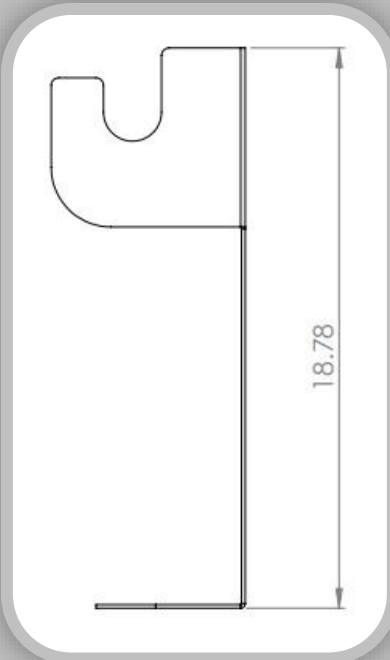


Hydra-Sep Brackets *continued...*

HSB1.5A



The HSB1.5A hydraulic separator bracket holds a 1.5" Caleffi 548 Series Hydraulic Separator. This bracket is specifically designed for this hydraulic separator. It has (x6) 3.2 sq inch holes on the back of the bracket which match up with the Hydro-Grid Panel.

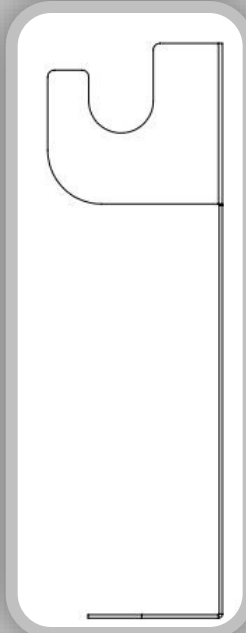
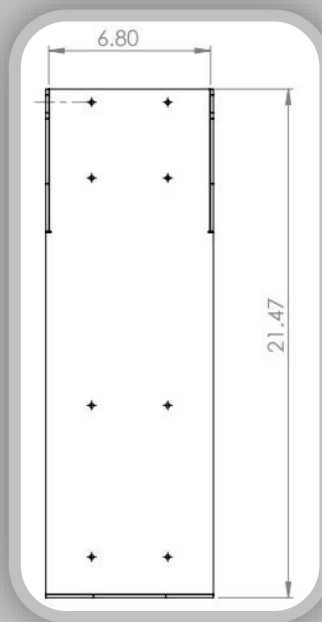


Hydra-Sep Brackets *continued...*

HSB2A



The HSB2A hydraulic separator bracket holds a 2" Caleffi 548 Series Hydraulic Separator. This bracket is specifically designed for this hydraulic separator. It has (x8) 3.2 sq inch holes on the back of the bracket which match up with the Hydro-Grid Panel.

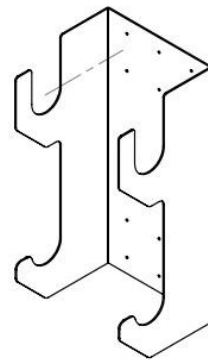
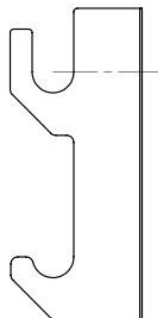
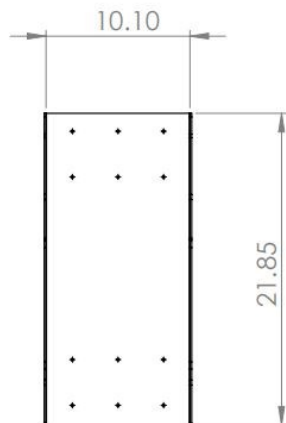


Hydra-Sep Brackets *continued...*

HSB2.5-AFA

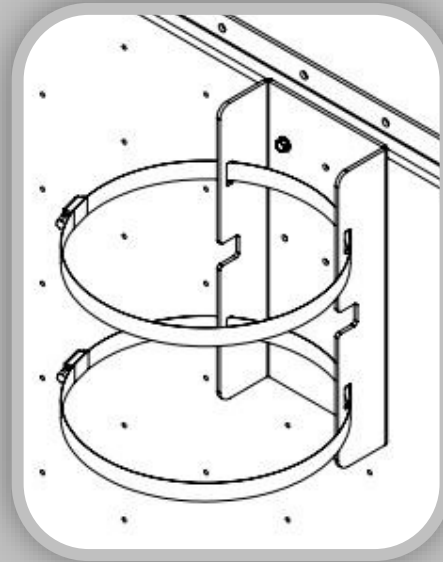


The HSB2.5-AFA hydraulic separator bracket holds a 2.5" Caleffi 548 Series ANSI Flanged Hydraulic Separator. This bracket is specifically designed for this hydraulic separator. It has (x12) 3.2 sq inch holes on the back of the bracket which match up with the Hydro-Grid Panel. This bracket has double arms for additional support to handle more weight of the separator when its full with water.



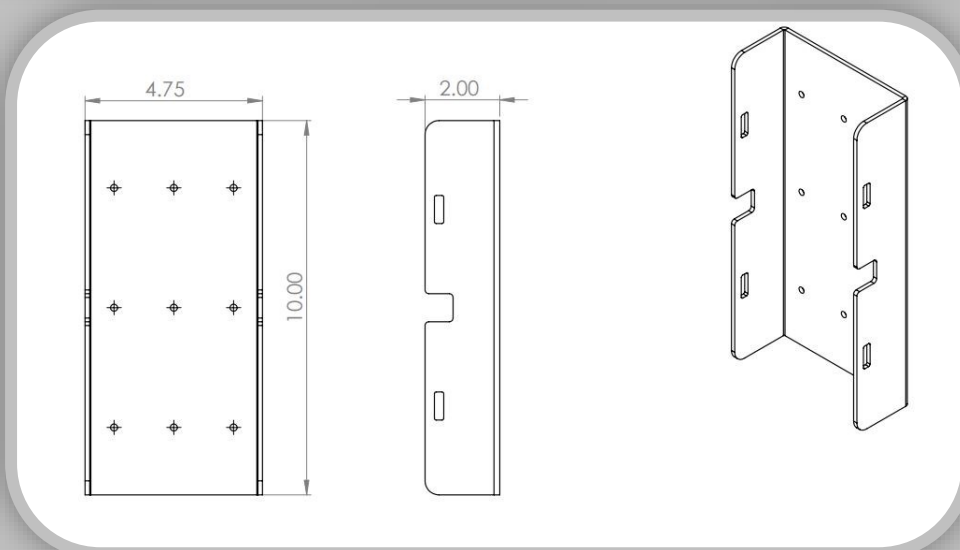
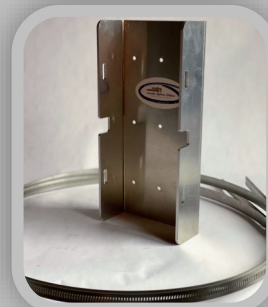
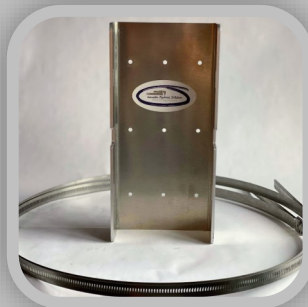
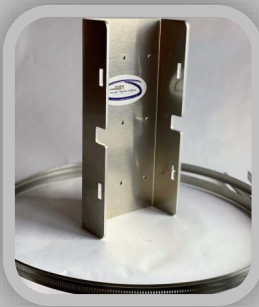
Expansion Tank Bracket

ETB-4.75x10A



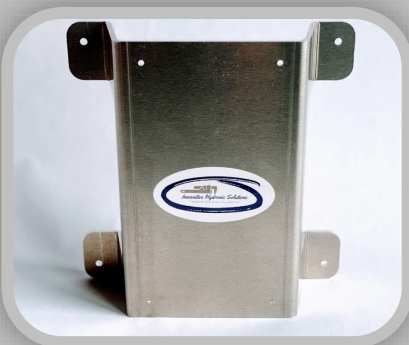
ETB-4.75x10A

The ETB-4.75x10A universal expansion tank bracket is designed with x9 holes on the back of the bracket. The outside holes match the 3.2 sq inches of the Hydro Grid Panel. The middle row of holes are optional mounting holes to screw the expansion tank bracket directly to a 2x4 stud or a floor joist. Our universal expansion tank bracket can mount any brand of expansion tanks on the market. The ETB-4.75x10A can mount sizes from 8" diameter tanks all the way up to 15 3/8" diameter tanks. Included with each expansion tank bracket is x2 Jet-Quick Connect 301 SS hose clamps. The hose clamps range is 3.5" to 16".



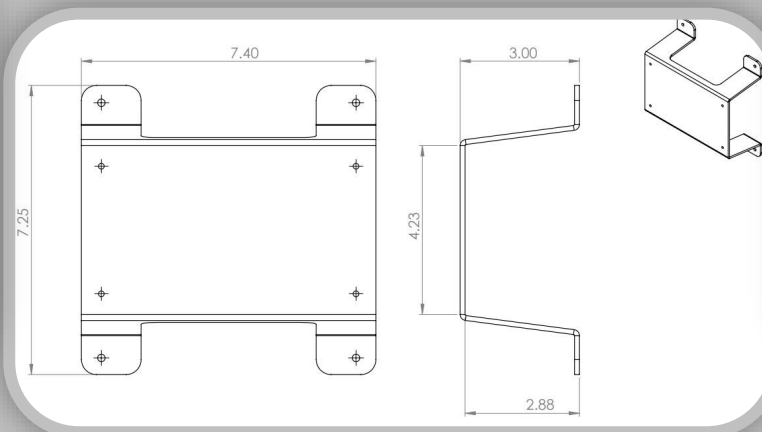
Bump Out Bracket

BOB-7.40x7.25A



BOB-7.40x7.25A

The BOB-7.40x7.25A is designed to “bump out” any pump bracket you attach to the Hydro-Grid Panel. This allows for easier piping and easier wiring to and from multiple pumps. You can also run a common return line through several bump out brackets. This makes for a clean and professional installation. The bump out bracket can allow up to a 2.5” IPS pipe to run through the bracket.



Terms & Conditions

Innovative Hydronic Solutions LLC reserves the right to make any changes without notice due to product improvements and continuous progress of new products. Pricing can change on a month to month basis, so make sure you have the most updated and recent price catalog. All the products in this catalog our Patent Pending.

1. Purchasing Terms:

All Invoice terms will be net 30 days. When an account has aged beyond 30 days, you will be notified . When an account has aged beyond 60 days, collection procedures will automatically be initiated, and your account will be placed on pre-pay. Any other terms must be arranged in advance and shall be granted solely at the discretion of Innovative Hydronic Solutions. A 3% transaction fee will be applied if paying with a credit card. We only accept Visa & Mastercard credit cards.

2. Shipping & Freight Damage:

When an order is placed on a carrier's truck, it becomes the property of the purchaser. If the order arrives damaged and you fail to note the damage or reject the shipment, it may be very difficult to pursue a damage claim against the carrier. The purchaser is in charge of filing any and all freight claims with whomever delivered the goods. We reserve the right to select the carrier, even though you may specify a different freight company. This is because your specified carrier may not serve our area, or may not be willing to ship on an open account with us. Innovative Hydronic Solutions will not be responsible for freight damage or incidental or consequential damages arising from it. All products purchased from Innovative Hydronic Solutions is F.O.B. and the purchaser is responsible for paying freight on all shipments.

3. Placing Orders:

All orders can be placed by either telephone, email, written purchase order or a faxed purchase order. A signed purchase order must be on file prior to any shipment from our inventory. Allow up to 5 days to review all orders. All purchase orders must have: 1. Complete billing and shipping address. 2. Purchase order number and job name and date. 3. Exact quantities with correct pricing on the purchase order before we process it. Check order confirmations carefully. If there are errors on your confirmation and you do not call them to our attention the order will be assumed correct, as stated.

4. Returns:

No merchandise may be returned for credit or adjustment for any reason without prior written return goods authorization form signed by an Innovative Hydronic Solutions employee. Authorized returns are subject to a 15% charge of invoice price to cover handling and restocking fees. Special ordered products may not be returned.

Notes:

[illegible]



121 West Hoyt St.

Carthage, SD 57323

www.innovativehydronicsolutions.com

Email: info@innovativehydronicsolutions.com

Phone: 605-772-2590



Catalog: IHSPC-01A